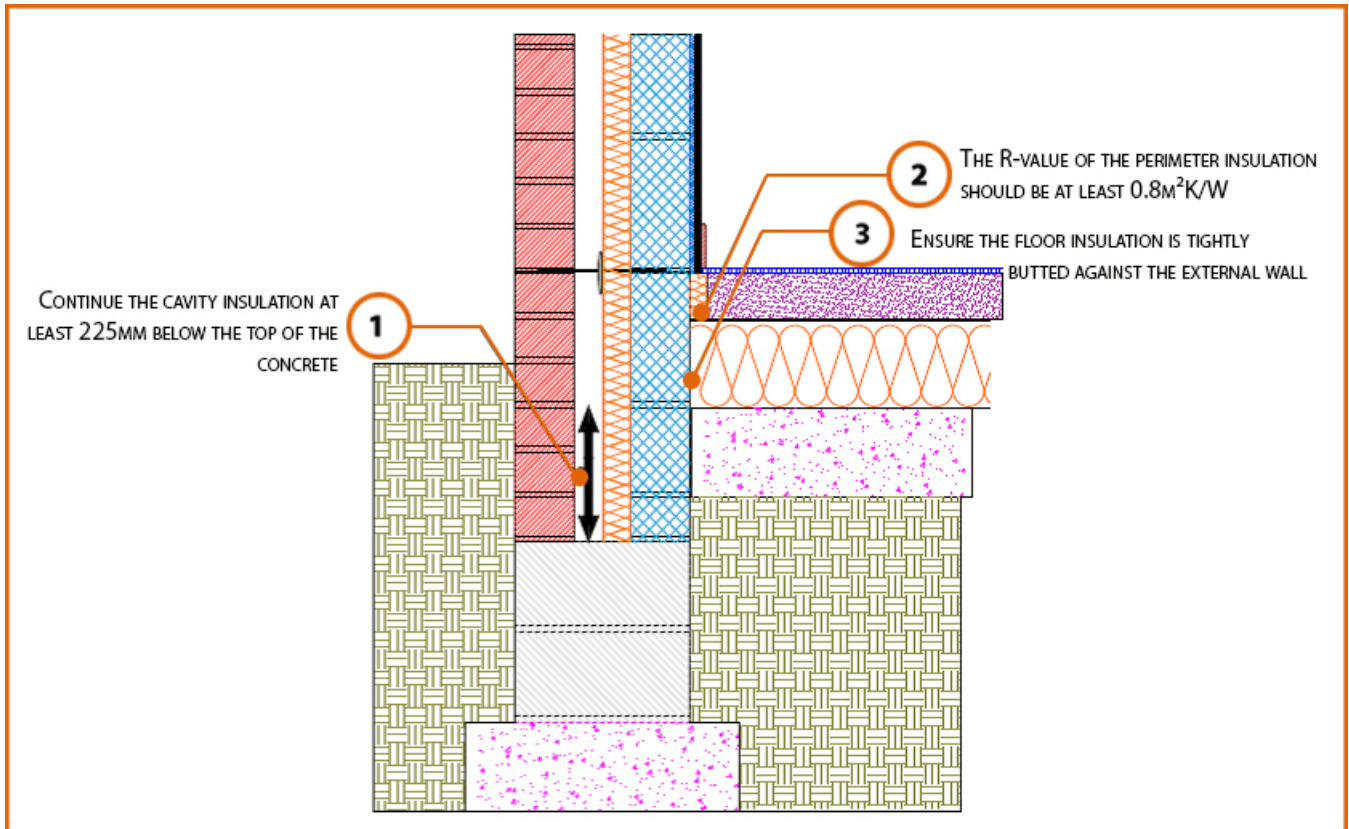


# LABC Registered Construction Details

## Masonry



Registration Number: E5MCPF13



### Build Up

External Masonry Cavity Wall

Masonry Outer Leaf ( $\lambda = 0.77$ )

Ultra Lightweight Concrete Block Inner Leaf  $\lambda \leq 0.28 \text{ W/mK}$

Partial Fill Insulation

Ground Floor – 100mm Slab

100mm Insulation ( $0.022\text{W/mK}$ ) Below 75mm Screed



## Calculated $\psi$ -values

Cavity Insulation	Inner leaf blockwork
	Ultra Lightweight Concrete Block $\lambda \leq 0.28$ W/mK
	$\Psi$ -value W/mK
50mm $\lambda=0.022$	<b>0.059</b>
100mm $\lambda=0.022$	<b>0.056</b>

## Points to Watch

- Ensure cavities are kept clean of mortar snots and other debris during construction.
- Damp proof membrane / air barrier should be lapped to damp proof course and plaster stop bead.
- Any service penetrations through the damp proof membrane / air barrier should be suitably sealed.
- The wall insulation installed must be considered fit for purpose below the wall dpc in relation to water absorption.