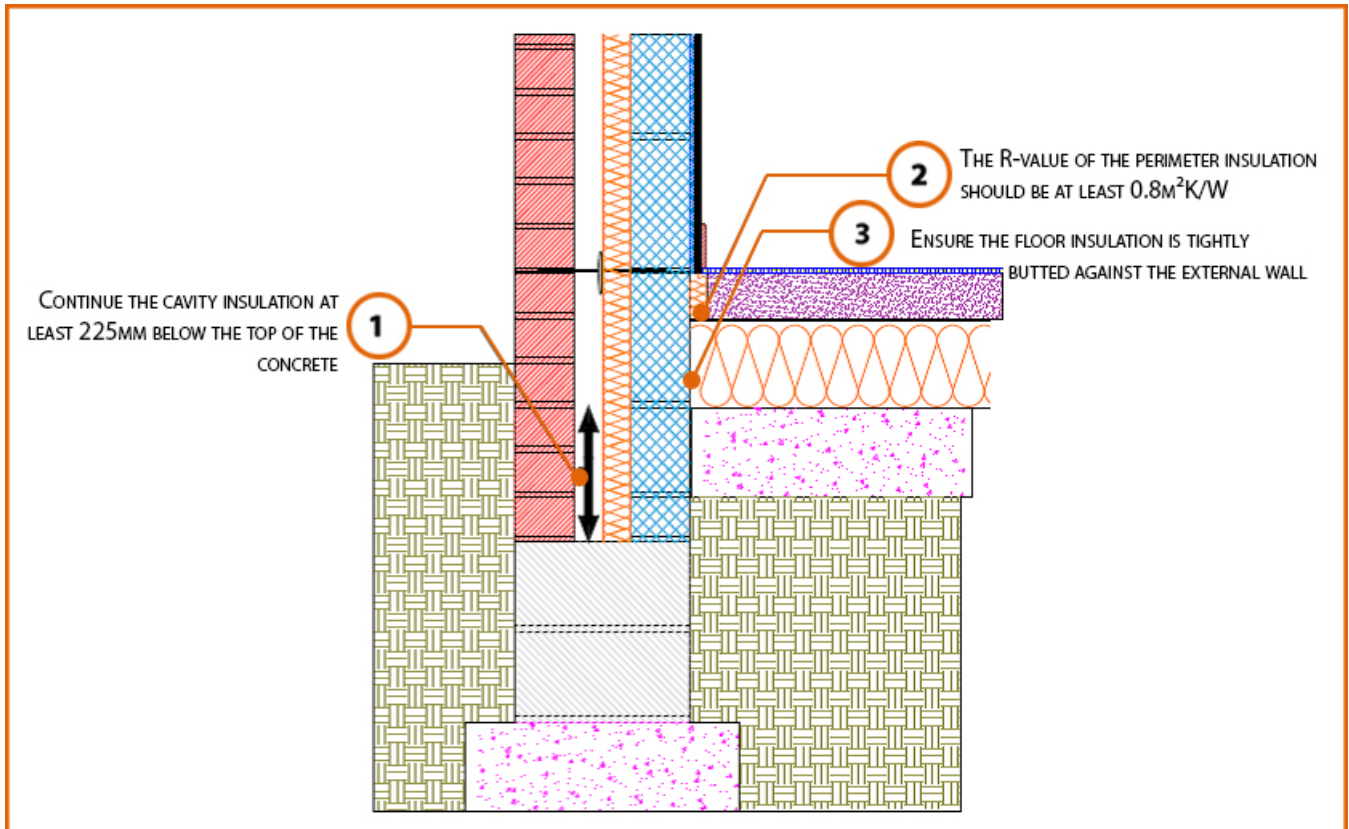


# LABC Registered Construction Details

## Masonry



Registration Number: E5MCPF14



### Build Up

External Masonry Cavity Wall

Masonry Outer Leaf ( $\lambda = 0.77$ )

Lightweight Concrete Block Inner Leaf  $\lambda \leq 0.60$  W/mK

Partial Fill Insulation

Ground Floor – 100mm Slab

100mm Insulation (0.022W/mK) Below 75mm Screed



## Calculated $\psi$ -values

Cavity Insulation	Inner leaf blockwork
	Lightweight Concrete Block $\lambda \leq 0.60$ W/mK
	$\Psi$ -value W/mK
50mm $\lambda=0.022$	<b>0.097</b>
100mm $\lambda=0.022$	<b>0.097</b>

## Points to Watch

- Ensure cavities are kept clean of mortar snots and other debris during construction.
- Damp proof membrane / air barrier should be lapped to damp proof course and plaster stop bead.
- Any service penetrations through the damp proof membrane / air barrier should be suitably sealed.
- The wall insulation installed must be considered fit for purpose below the wall dpc in relation to water absorption.