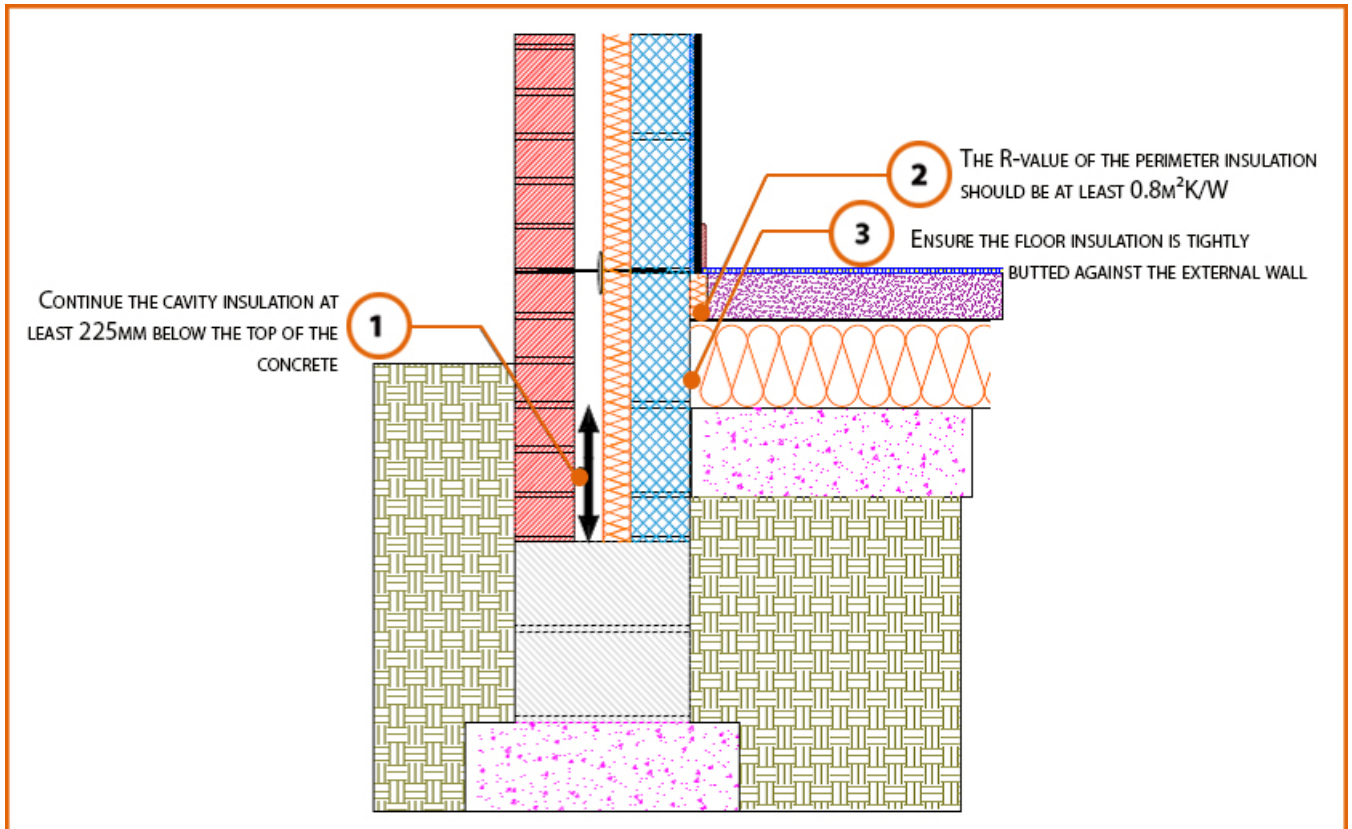


LABC Registered Construction Details

Masonry



Registration Number: E5MCPF15



Build Up

External Masonry Cavity Wall

Masonry Outer Leaf ($\lambda = 0.77$)

Dense Concrete Block Inner Leaf $\lambda \leq 1.33$ W/mK

Partial Fill Insulation

Ground Floor – 100mm Slab

100mm Insulation (0.022W/mK) Below 75mm Screed



Calculated ψ -values

Cavity Insulation	Inner leaf blockwork
	Dense Concrete Block $\lambda \leq 1.33$ W/mK
	Ψ -value W/mK
50mm $\lambda=0.022$	0.159
100mm $\lambda=0.022$	0.164

Points to Watch

- Ensure cavities are kept clean of mortar snots and other debris during construction.
- Damp proof membrane / air barrier should be lapped to damp proof course and plaster stop bead.
- Any service penetrations through the damp proof membrane / air barrier should be suitably sealed.
- The wall insulation installed must be considered fit for purpose below the wall dpc in relation to water absorption.