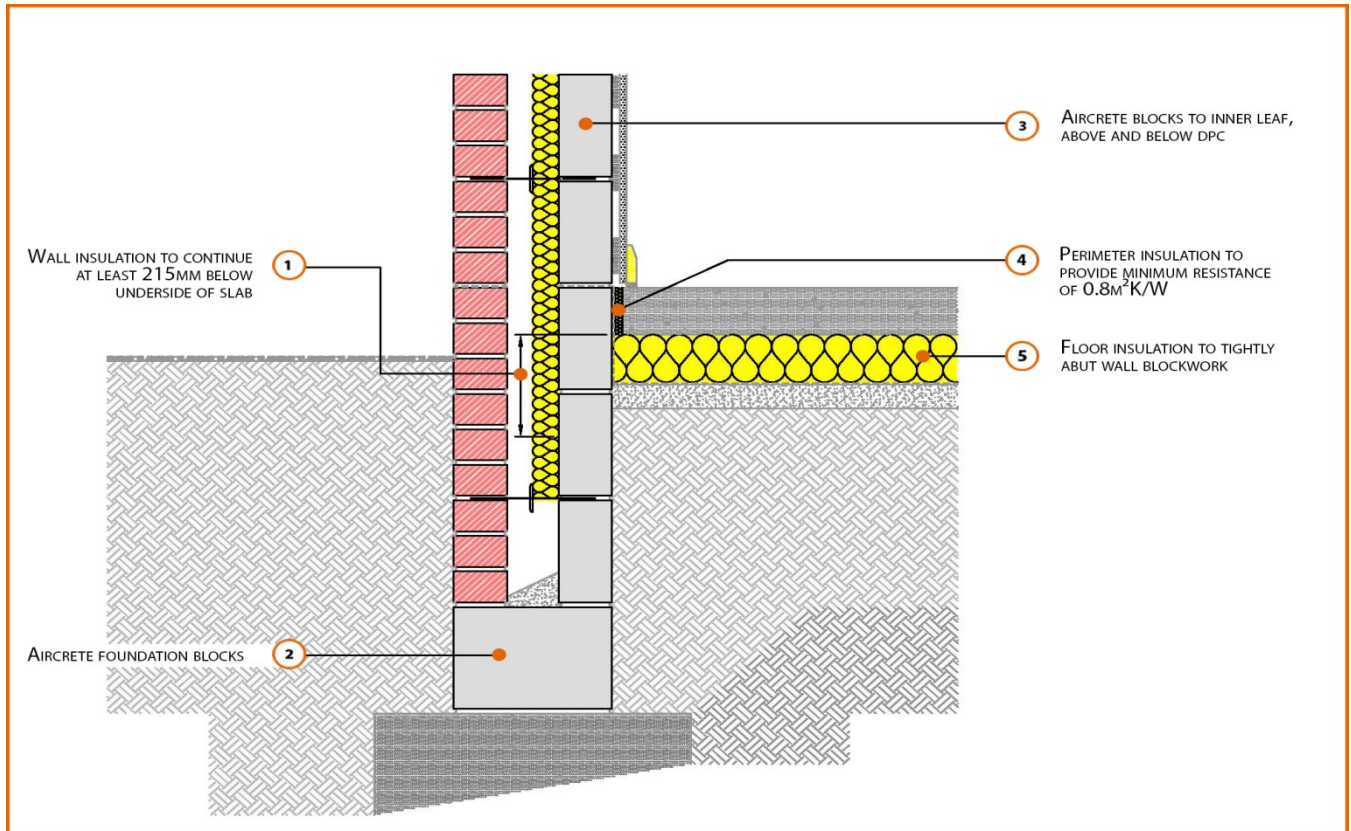


# LABC Registered Construction Details

## Masonry



Registration Number: E5MCPF23



### Build Up

External Masonry Cavity Wall

Masonry Outer Leaf ( $\lambda = 0.77$ )

100mm Aircrete Block Inner Leaf ( $\lambda = 0.15$  W/mK)

Partial Fill Insulation

In Situ Ground Bearing Concrete Floor

100mm Insulation Below Slab (0.022W/mK)



## Calculated $\psi$ -values

	Inner leaf blockwork
	Aircrete Block $\lambda = 0.15$ W/mK
Cavity Insulation	$\psi$ -value W/mK
50mm $\lambda=0.022$	0.086
100mm $\lambda=0.022$	0.075

## Points to Watch

- Ensure cavities are kept clean of mortar snots and other debris during construction
- Damp proof membrane / air barrier should be lapped to damp proof course and plaster stop bead.
- Any service penetrations through the damp proof membrane / air barrier should be suitably sealed.
- The wall insulation installed must be considered fit for purpose below the wall dpc in relation to water absorption.