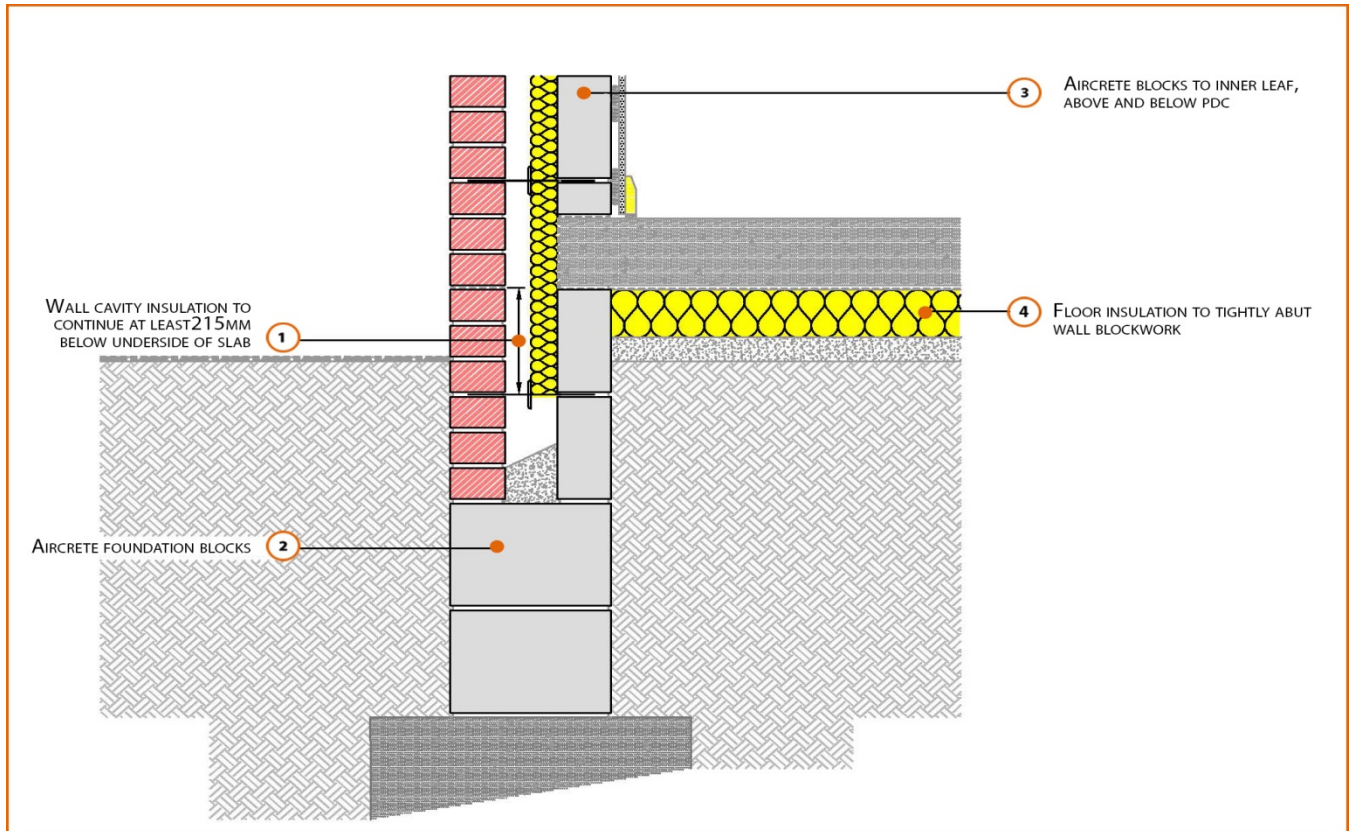


# LABC Registered Construction Details

## Masonry



Registration Number: E5MCPF31



### Build Up

External Masonry Cavity Wall

Masonry Outer Leaf ( $\lambda = 0.77$ )

100mm Aircrete Block Inner Leaf ( $\lambda = 0.11 \text{ W/mK}$ )

Partial Fill Insulation

150mm Cast In-Situ Suspended Slab

150mm Insulation Below Slab ( $0.022 \text{ W/mK}$ )



## Calculated $\psi$ -values

Cavity Insulation	Inner leaf blockwork
	Aircrete Block $\lambda = 0.11$ W/mK
	$\psi$ -value W/mK
50mm $\lambda=0.022$	0.124
100mm $\lambda=0.022$	0.097

## Points to Watch

- Ensure cavities are kept clean of mortar snots and other debris during construction
- Damp proof membrane / air barrier should be lapped to damp proof course and plaster stop bead.
- Any service penetrations through the damp proof membrane / air barrier should be suitably sealed.
- The wall insulation installed must be considered fit for purpose below the wall dpc in relation to water absorption.