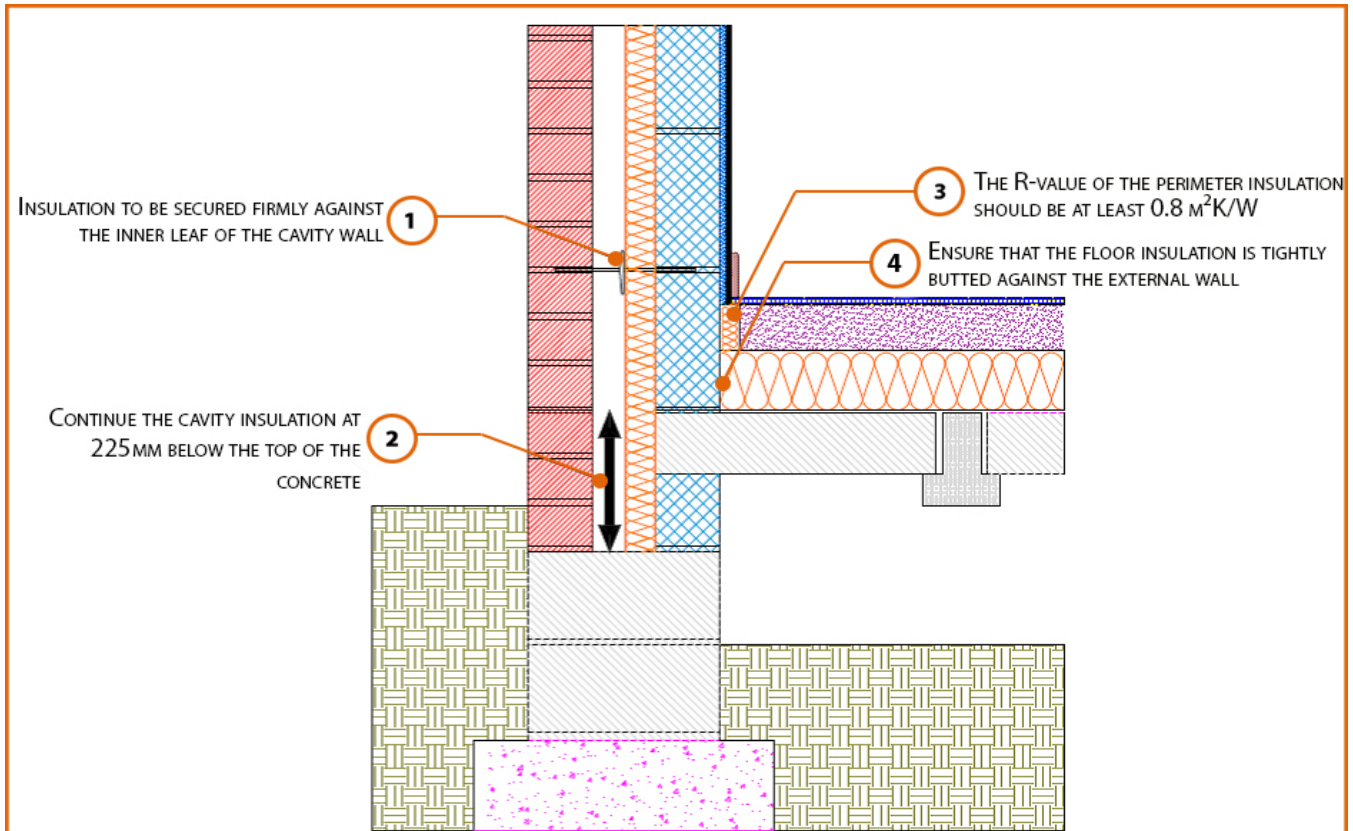


## Registration Number: E5MCPF3



### Build Up

External Masonry Cavity Wall

Masonry Outer Leaf ( $\lambda = 0.77$ )

Dense Concrete Block Inner Leaf  $\lambda \leq 1.33$  W/mK

Partial Fill Insulation

Beam and Block Floor

Lightweight Floor Block

100mm Insulation Below Screed (0.022W/mK)

## Calculated $\psi$ -values

	Inner leaf blockwork
	Dense Concrete Block $\lambda \leq 1.33$ W/mK
Cavity Insulation	$\psi$ -value W/mK
50mm $\lambda=0.022$	<b>0.144</b>
100mm $\lambda=0.022$	<b>0.151</b>

## Points to Watch

- Ensure cavities are kept clean of mortar snots and other debris during construction
- Damp proof membrane / air barrier should be lapped to damp proof course and plaster stop bead.
- Any service penetrations through the damp proof membrane / air barrier should be suitably sealed.
- Sub floor ventilation to be in accordance with manufacturers recommendations. A cavity barrier type sleeve should be used through the cavity.
- The wall insulation installed must be considered fit for purpose below the wall dpc in relation to water absorption.