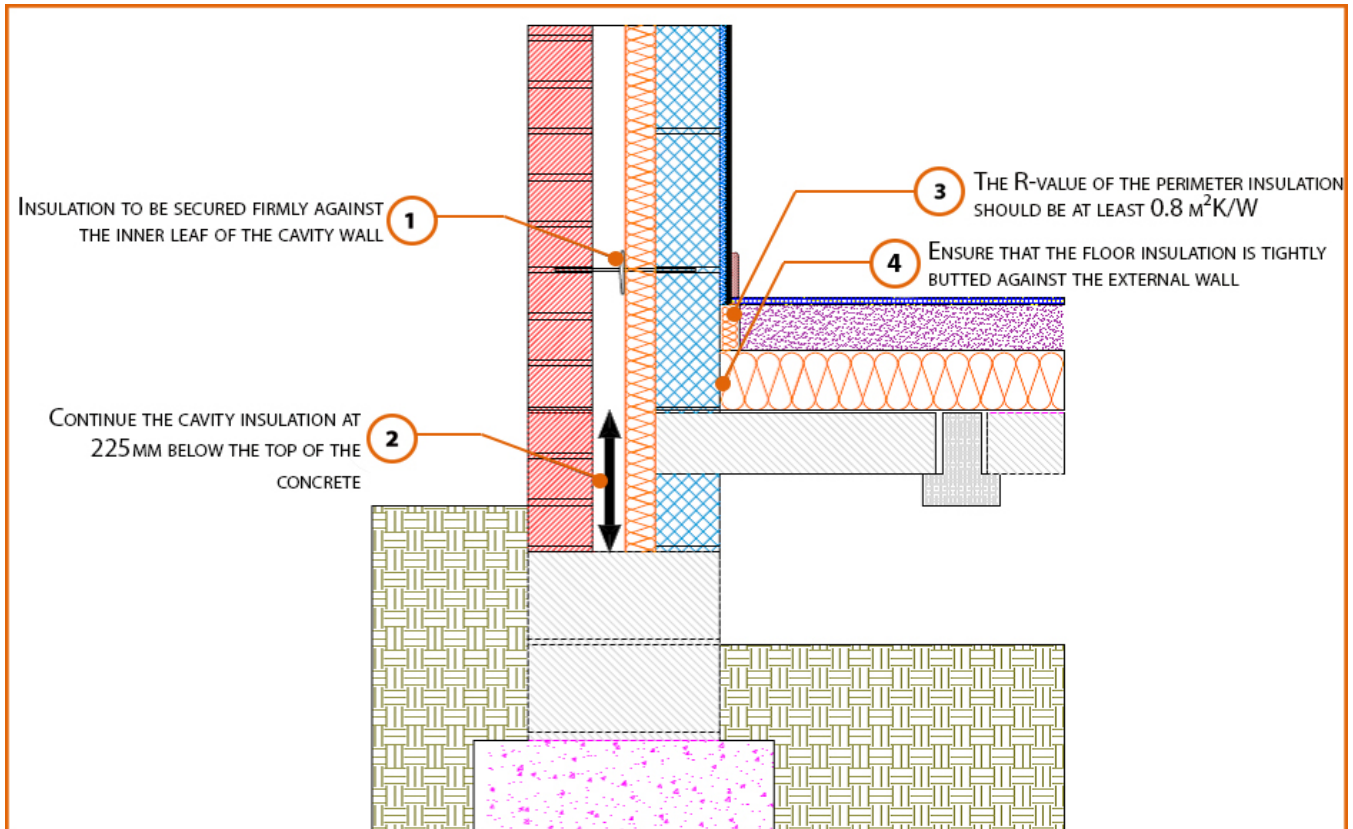


Registration Number: E5MCPF7



Build Up

External Masonry Cavity Wall
Masonry Outer Leaf ($\lambda = 0.77$)
Ultra Lightweight Concrete Block $\lambda \leq 0.28$ W/Mk
Partial Fill Insulation
Beam and Block Floor
Lightweight Floor Block
150mm Insulation Below Screed (0.022W/mK)

Calculated ψ -values

Cavity Insulation	Inner leaf blockwork
	Ultra Lightweight Concrete Block $\lambda \leq 0.28$ W/mK
	ψ -value W/mK
50mm $\lambda=0.022$	0.062
100mm $\lambda=0.022$	0.061

Points to Watch

- Ensure cavities are kept clean of mortar snots and other debris during construction
- Damp proof membrane / air barrier should be lapped to damp proof course and plaster stop bead.
- Any service penetrations through the damp proof membrane / air barrier should be suitably sealed.
- Sub floor ventilation to be in accordance with manufacturers recommendations. A cavity barrier type sleeve should be used through the cavity.
- The wall insulation installed must be considered fit for purpose below the wall dpc in relation to water absorption.