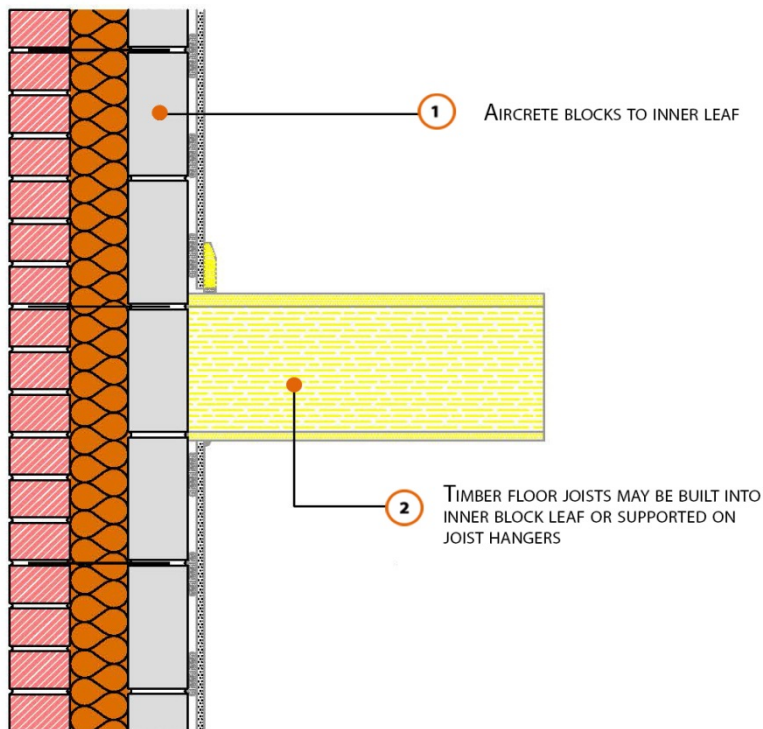


Registration Number: E6MCFF6



Build Up

External Masonry Cavity Wall

Masonry Outer Leaf ($\lambda = 0.77$)

100mm Aircrete Block Inner Leaf ($\lambda = 0.19 \text{ W/mK}$)

Full Fill Insulation

Intermediate Timber Floor Within Dwelling

240mm Timber I Joist Built In

Calculated ψ -values

Cavity Insulation	Inner leaf blockwork
	Aircrete Block $\lambda = 0.19$ W/mK
	ψ -value W/mK
100mm $\lambda=0.037$	0.004
150mm $\lambda=0.037$	0.003
100mm $\lambda=0.032$	0.002
150mm $\lambda=0.032$	0.001

Points to Watch

- Ensure cavities are kept clean of mortar snots and other debris during construction
- Seal between the wall air barrier and the floor above and below the connection with a flexible sealant.
- Seal all penetrations through the inner leaf with a flexible sealant or purpose made shoe, which should itself be sealed to the inner leaf.
- Joist hangers should be considered in preference to building timber joists into the inner leaf.
- Where engineered floor joists are used, careful attention should be paid to fixing filler pieces on both sides of the web between flanges.