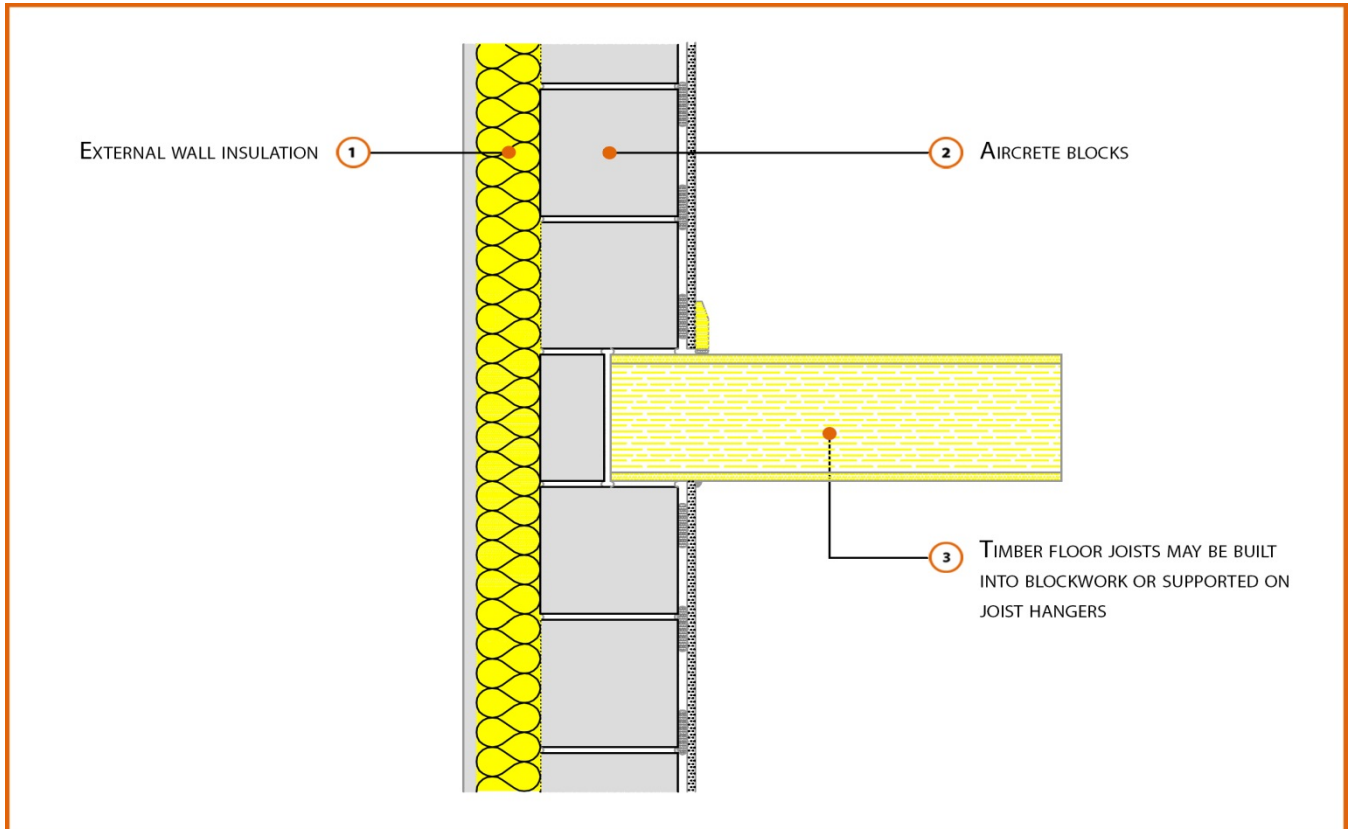


LABC Registered Construction Details

Masonry



Registration Number: E6SMEW2



Build Up

Solid External Masonry Wall

215mm Aircrete Solid Wall ($\lambda \leq 0.11$ W/mK)

Render & Insulation ($\lambda = 0.038$ W/mK)

Timber Floor Joists Between Floor built in or on hangers



Calculated ψ -values

Cavity Insulation	Inner leaf blockwork
	Aircrete Block $\lambda \leq 0.11$ W/mK
	ψ -value W/mK
75mm $\lambda=0.038$	0.014
100mm $\lambda=0.038$	0.012
150mm $\lambda=0.038$	0.038

Points to Watch

- Ensure block face is kept clean of mortar snots and other debris during construction to permit tight fit of external wall insulation.
- Seal between the wall air barrier and the floor above and below the connection with a flexible sealant.
- Seal all penetrations through the inner leaf with a flexible sealant or purpose made shoe, which should itself be sealed to the inner leaf.
- Joist hangers should be considered in preference to building timber joists into the inner leaf.
- Where engineered floor joists are used, careful attention should be paid to fixing filler pieces on both sides of the web between flanges.
- Seal all penetrations into block leaf with a flexible sealant or purpose made shoe, which should itself be sealed to the floor type when built into the wall rather than held on hangars.