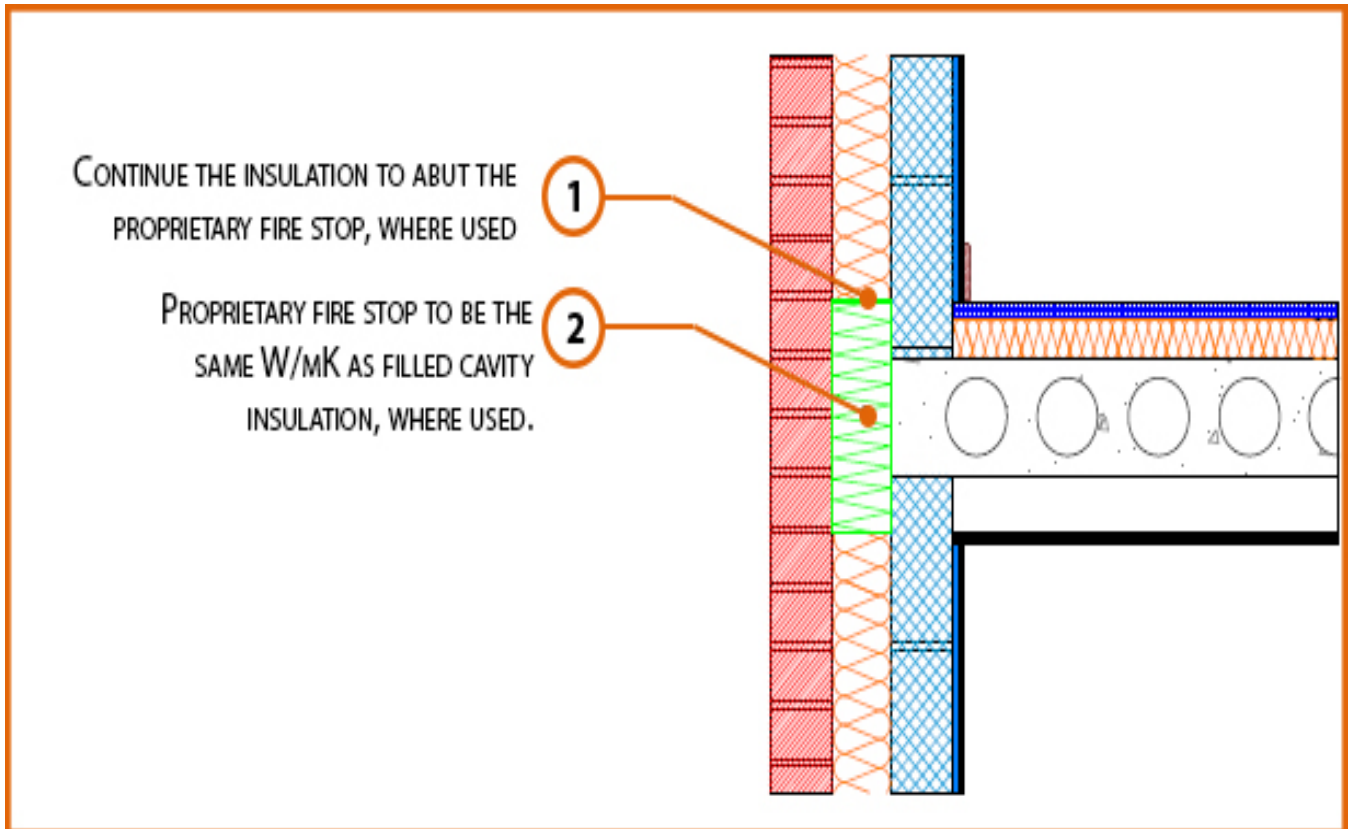


LABC Registered Construction Details

Masonry



Registration Number: E7MCFF1



Build Up

External Masonry Cavity Wall

Masonry Outer Leaf ($\lambda = 0.77$)

Ultra Lightweight Concrete Block $\lambda \leq 0.28$ W/mK

Full Fill Insulation

Precast Concrete Floor Between Dwellings



Calculated ψ -values

Cavity Insulation	Inner leaf blockwork
	Ultra Lightweight Concrete Block $\lambda \leq 0.28$ W/mK
	ψ -value W/mK
100mm $\lambda=0.037$	0.104
100mm $\lambda=0.032$	0.092
150mm $\lambda=0.037$	0.074
150mm $\lambda=0.032$	0.065

* Half the ψ -value shown should be applied to each dwelling

Points to Watch

- Ensure cavities are kept clean of mortar spots and other debris during construction.
- Seal between the wall air barrier and the floor above and below the connection with a flexible sealant.
- Separating floors require additional layers and components to comply with Fire and Noise requirements.
- This detail conforms with the MIMA good practice guide, when full fill insulation is used the cavity barrier is NOT a requirement of Approved Document Part B.
- Cavity barriers may require an additional vertical DPC and/or cavity tray.