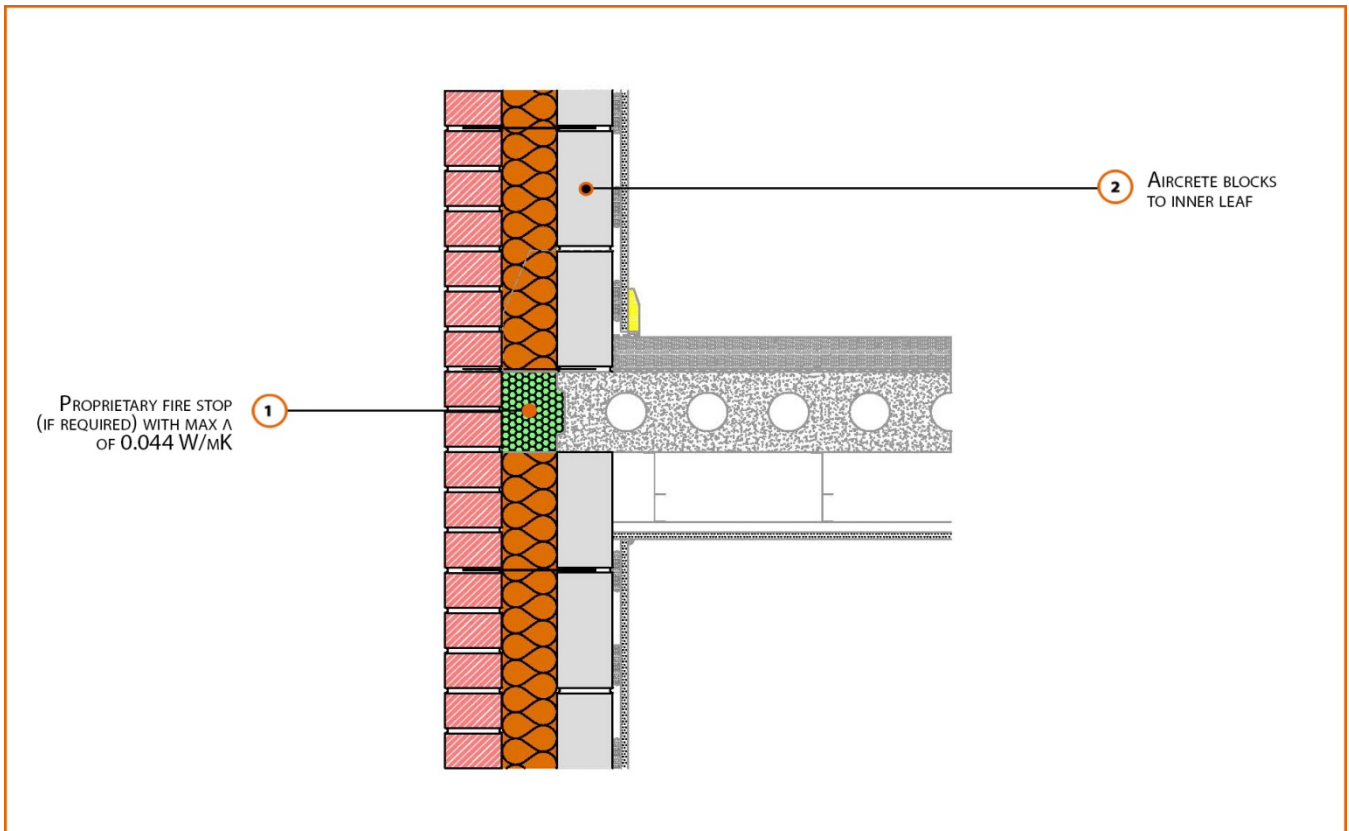


# LABC Registered Construction Details

## Masonry



Registration Number: E7MCFF6



### Build Up

External Masonry Cavity Wall

Masonry Outer Leaf ( $\lambda = 0.77$ )

100mm Aircrete Block Inner Leaf ( $\lambda = 0.19 \text{ W/mK}$ )

Full Fill Insulation

Concrete Separating Floor Between Dwellings

150mm Precast Concrete Floor Plank



## Calculated $\psi$ -values

Cavity Insulation	Inner leaf blockwork
	Aircrete Block $\lambda = 0.19$ W/mK
	$\psi$ -value W/mK
100mm $\lambda=0.037$	0.042
150mm $\lambda=0.037$	0.029
100mm $\lambda=0.032$	0.039
150mm $\lambda=0.032$	0.027

## Points to Watch

- Ensure cavities are kept clean of mortar snots and other debris during construction.
- Seal between the wall air barrier and the floor above and below the connection with a flexible sealant.
- Separating floors require additional layers and components to comply with Fire and Noise requirements.
- This detail conforms with the MIMA good practice guide, when full fill insulation is used the cavity barrier is NOT a requirement of Approved Document Part B.
- Cavity barriers may require an additional vertical DPC and/or cavity tray.