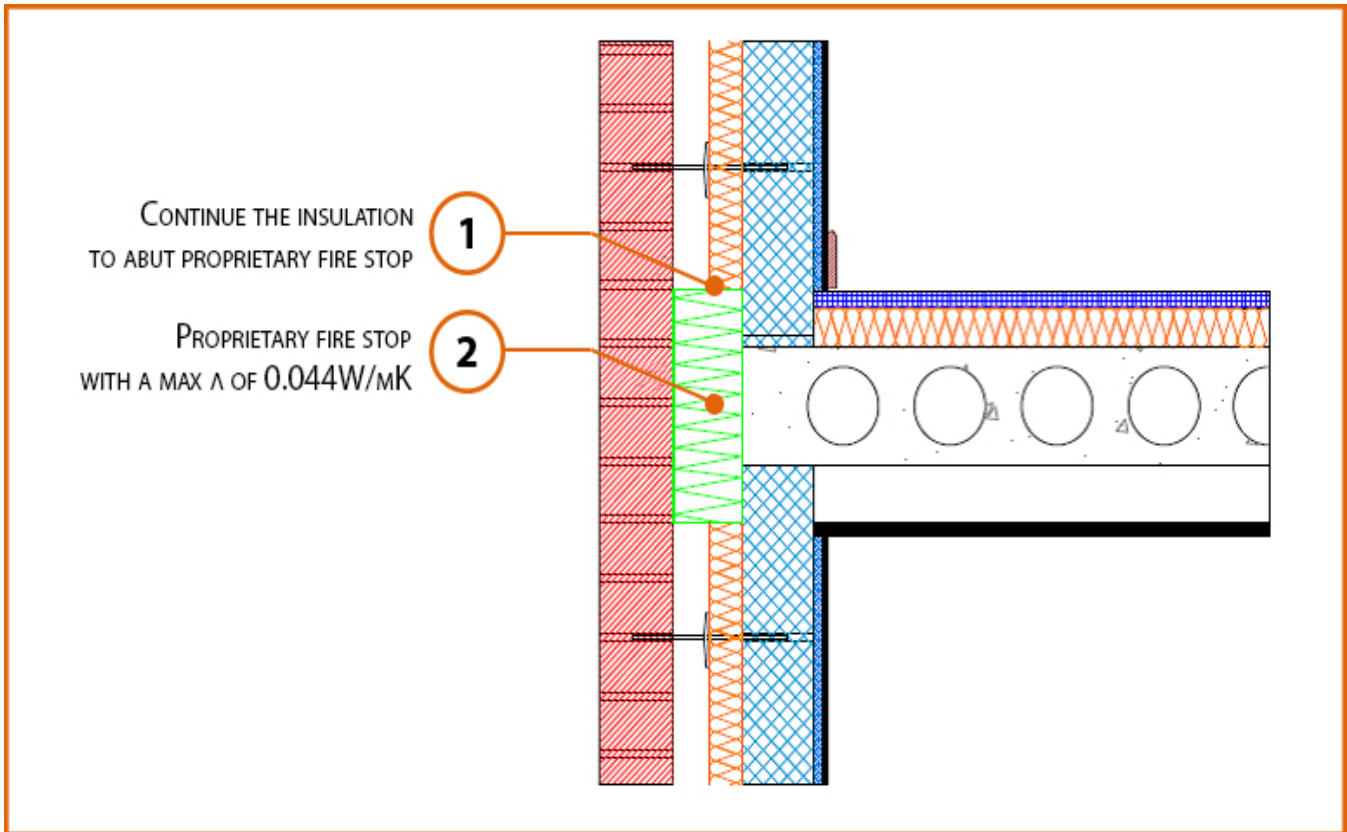


Registration Number: E7MCPF1



Build Up

External Masonry Cavity Wall

Masonry Outer Leaf ($\lambda = 0.77$)

Ultra Lightweight Concrete Block Inner Leaf $\lambda \leq 0.28$ W/mK

Partial Fill Insulation

Precast Concrete Floor Between Dwellings

LABC Registered Construction Details Masonry



Calculated ψ -values

	Inner leaf blockwork
	Ultra Lightweight Concrete Block $\lambda \leq 0.28$ W/mK
Cavity Insulation	ψ -value W/mK*
50mm $\lambda=0.022$	0.103
100mm $\lambda=0.022$	0.061

*Half the ψ -value shown should be applied to each dwelling

Points to Watch

- Ensure cavities are kept clean of mortar snots and other debris during construction.
- Seal between the wall air barrier and the floor above and below the connection with a flexible sealant.
- Seal all penetrations through the inner leaf with a flexible sealant or purpose made shoe, which should itself be sealed to the inner leaf.
- Separating floors require additional layers and components to comply with Fire and Noise requirements.
- Cavity barriers may require an additional vertical DPC and/or cavity tray.

