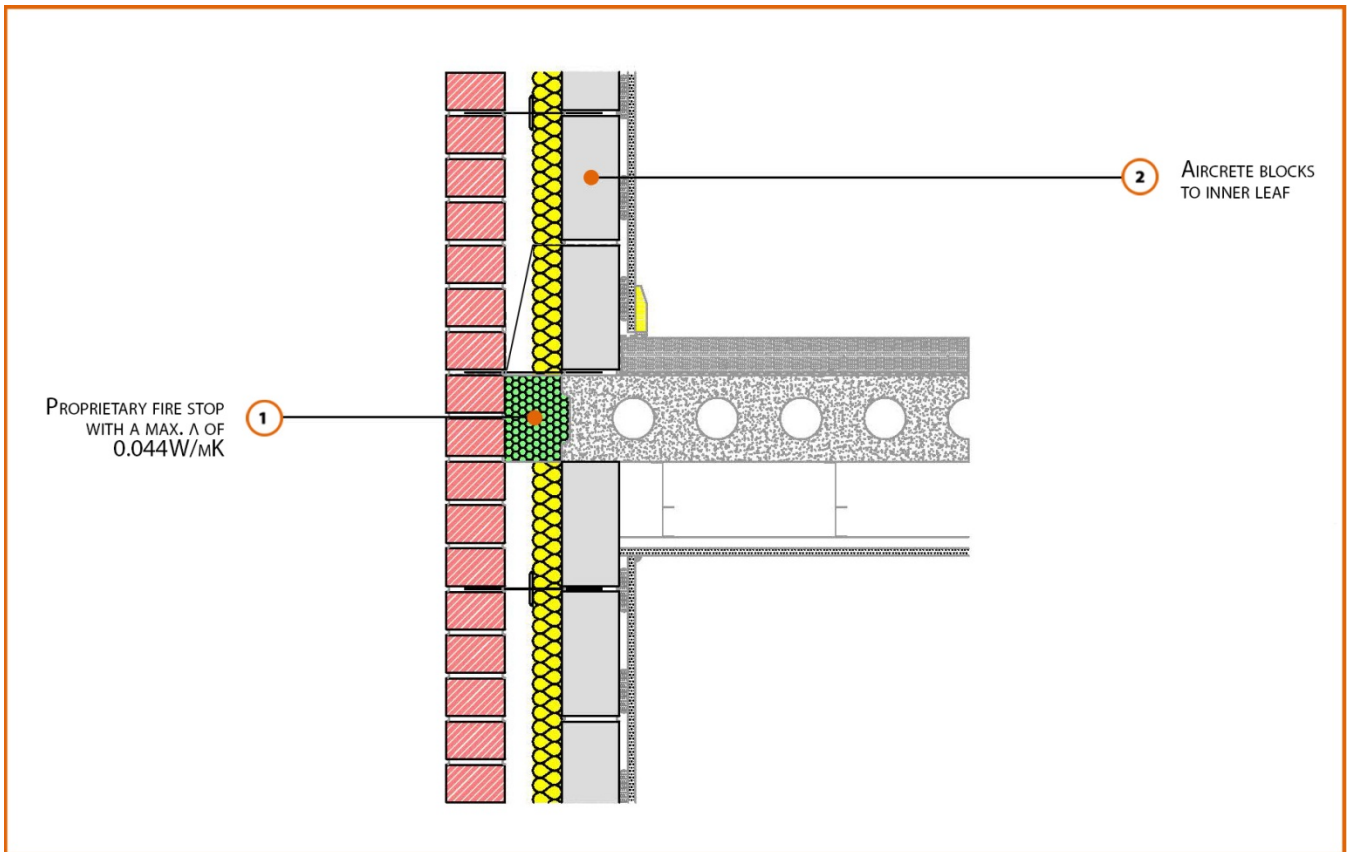


## Registration Number: E7MCPF4



### Build Up

External Masonry Cavity Wall

Masonry Outer Leaf ( $\lambda = 0.77$ )

100mm Aircrete Block Inner Leaf ( $\lambda = 0.11$  W/mK)

Partial Fill Insulation

Concrete Separating Floor Between Dwellings

150mm Precast Concrete Floor Plank

## Calculated $\psi$ -values

|                       | Inner leaf blockwork                         |
|-----------------------|--|
|                       | Aircrete Block $\lambda = 0.11 \text{ W/mK}$ |
| Cavity Insulation     | $\psi$ -value $\text{W/mK}$                  |
| 50mm $\lambda=0.022$  | 0.044  |
| 100mm $\lambda=0.022$ | 0.029  |

## Points to Watch

- Ensure cavities are kept clean of mortar snots and other debris during construction.
- Seal between the wall air barrier and the floor above and below the connection with a flexible sealant.
- Seal all penetrations through the inner leaf with a flexible sealant or purpose made shoe, which should itself be sealed to the inner leaf.
- Separating floors require additional layers and components to comply with Fire and Noise requirements.
- Cavity barriers may require an additional vertical DPC and/or cavity tray.