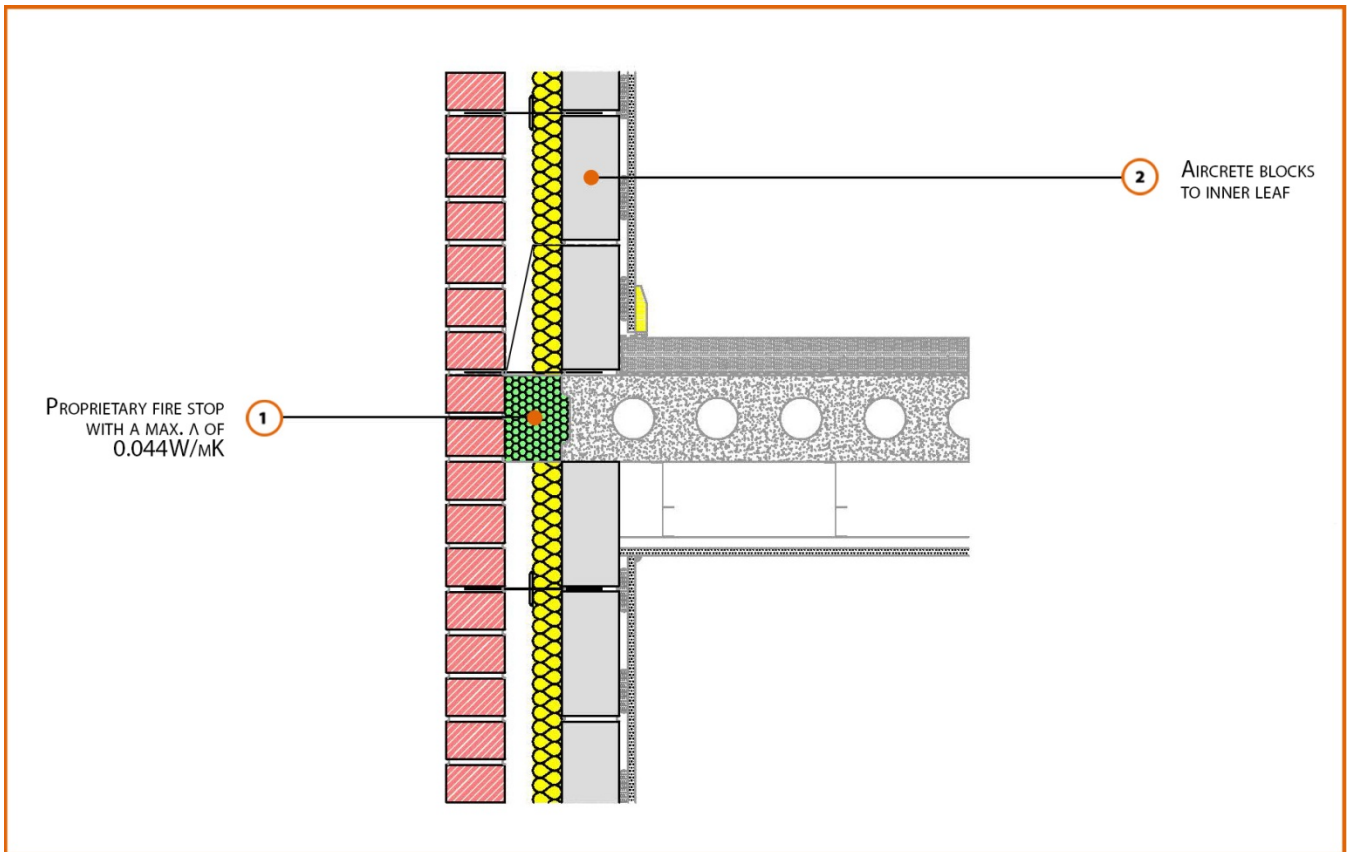


Registration Number: E7MCPF5



Build Up

External Masonry Cavity Wall

Masonry Outer Leaf ($\lambda = 0.77$)

100mm Aircrete Block Inner Leaf ($\lambda = 0.15 \text{ W/mK}$)

Partial Fill Insulation

Concrete Separating Floor Between Dwellings

150mm Precast Concrete Floor Plank

Calculated ψ -values

| | Inner leaf blockwork |
|-----------------------|--|
| | Aircrete Block $\lambda = 0.15 \text{ W/mK}$ |
| Cavity Insulation | ψ -value W/mK |
| 50mm $\lambda=0.022$ | 0.044 |
| 100mm $\lambda=0.022$ | 0.029 |

Points to Watch

- Ensure cavities are kept clean of mortar snots and other debris during construction.
- Seal between the wall air barrier and the floor above and below the connection with a flexible sealant.
- Seal all penetrations through the inner leaf with a flexible sealant or purpose made shoe, which should itself be sealed to the inner leaf.
- Separating floors require additional layers and components to comply with Fire and Noise requirements.
- Cavity barriers may require an additional vertical DPC and/or cavity tray.