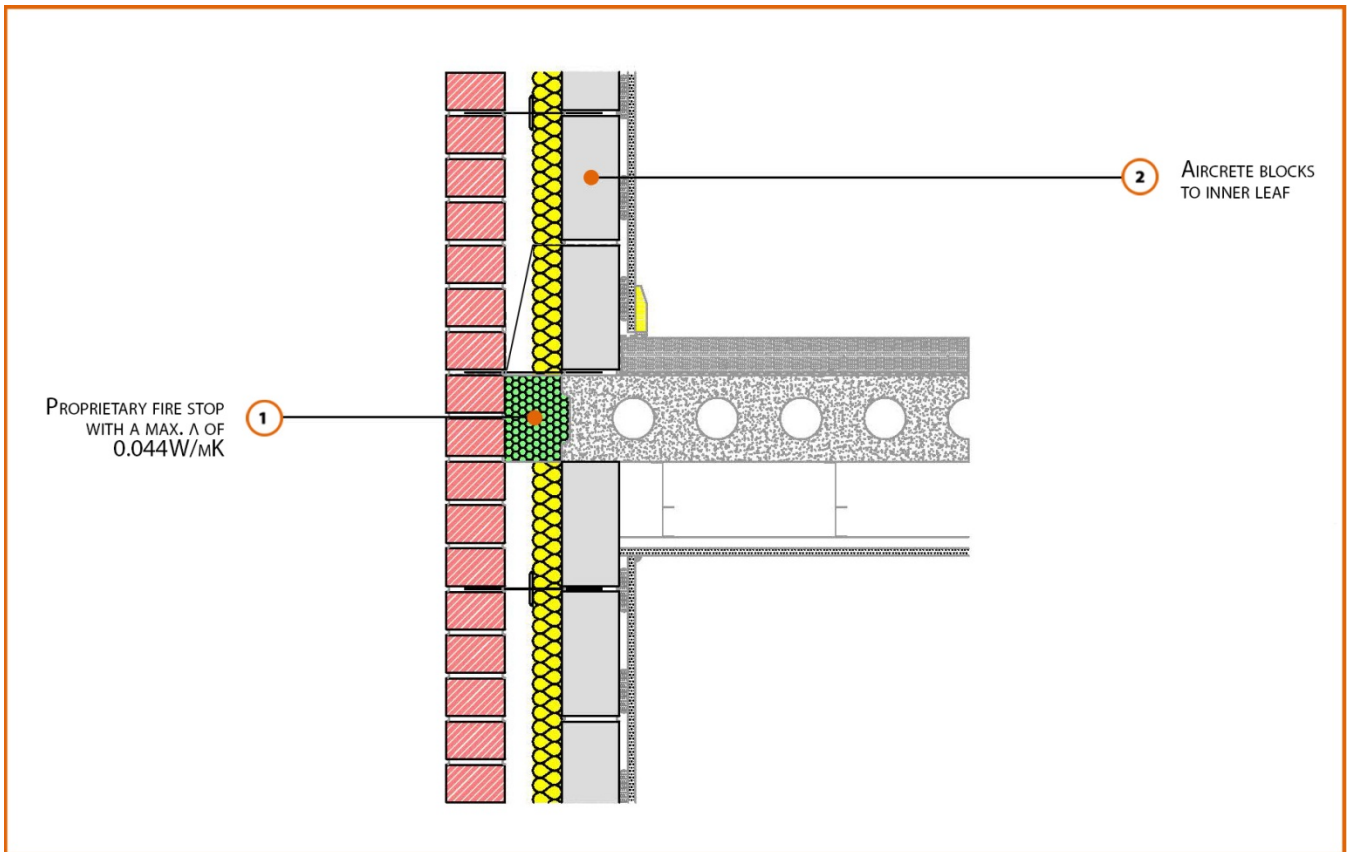


Registration Number: E7MCPF6



Build Up

External Masonry Cavity Wall

Masonry Outer Leaf ($\lambda = 0.77$)

100mm Aircrete Block Inner Leaf ($\lambda = 0.19$ W/mK)

Partial Fill Insulation

Concrete Separating Floor Between Dwellings

150mm Precast Concrete Floor Plank

Calculated ψ -values

	Inner leaf blockwork
	Aircrete Block $\lambda = 0.19 \text{ W/mK}$
Cavity Insulation	ψ -value W/mK
50mm $\lambda=0.022$	0.043
100mm $\lambda=0.022$	0.029

Points to Watch

- Ensure cavities are kept clean of mortar snots and other debris during construction.
- Seal between the wall air barrier and the floor above and below the connection with a flexible sealant.
- Seal all penetrations through the inner leaf with a flexible sealant or purpose made shoe, which should itself be sealed to the inner leaf.
- Separating floors require additional layers and components to comply with Fire and Noise requirements.
- Cavity barriers may require an additional vertical DPC and/or cavity tray.