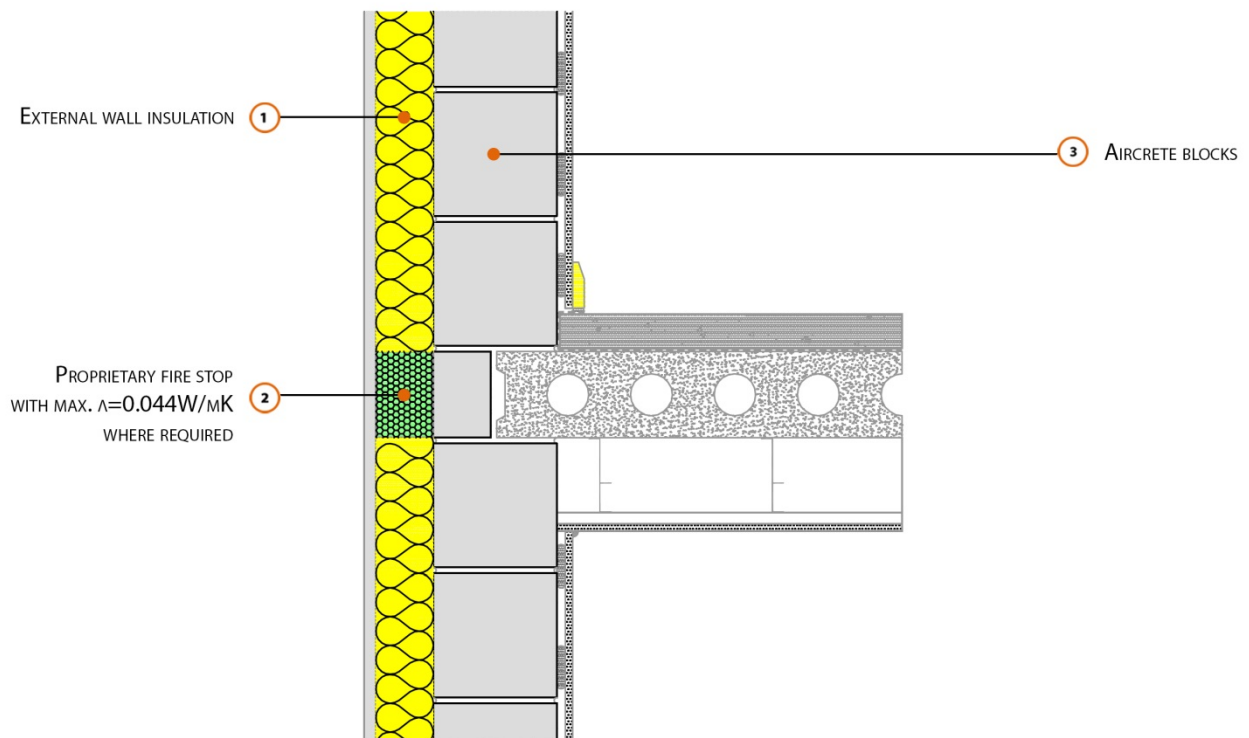


# LABC Registered Construction Details Masonry



Registration Number: E7SMEW3



## Build Up

Solid External Masonry Wall

215mm Aircrete Solid Wall ( $\lambda \leq 0.15 \text{ W/mK}$ )

Render & Insulation ( $\lambda = 0.022 \text{ W/mK}$ )

Proprietary Insulated Firestop ( $\lambda \leq 0.044 \text{ W/mK}$ )

Concrete Separating Floor Between Dwellings

150mm Precast Concrete Floor Plank



## Calculated $\psi$ -values

	Inner leaf blockwork
	Aircrete Block $\lambda \leq 0.15$ W/mK
Cavity Insulation	$\psi$ -value W/mK
50mm $\lambda=0.022$	0.053
75mm $\lambda=0.022$	0.040
100mm $\lambda=0.022$	0.032

## Points to Watch

- Ensure block face is kept clean of mortar snots and other debris during construction to permit tight fit of external wall insulation.
- Seal between the wall air barrier and the floor above and below the connection with a flexible sealant.
- Separating floors require additional layers and components to comply with Fire and Noise requirements
- Seal all penetrations into block leaf with a flexible sealant or purpose made shoe, which should itself be sealed to the floor type when built into the wall rather than held on hangars.