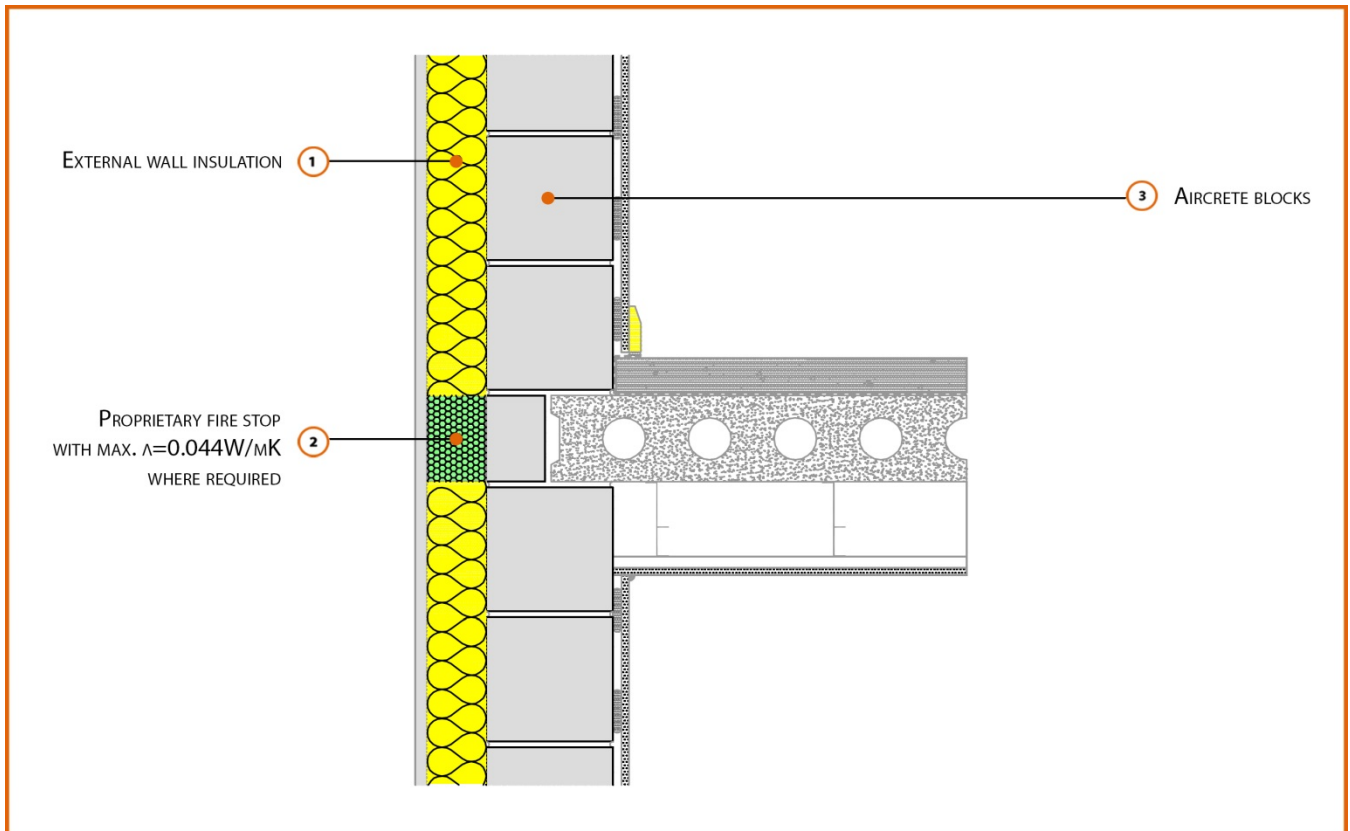


LABC Registered Construction Details Masonry



Registration Number: E7SMEW6



Build Up

Solid External Masonry Wall

215mm Aircrete Solid Wall ($\lambda \leq 0.19 \text{ W/mK}$)

Render & Insulation ($\lambda = 0.038 \text{ W/mK}$)

Proprietary Insulated Firestop ($\lambda \leq 0.044 \text{ W/mK}$)

Concrete Separating Floor Between Dwellings

150mm Precast Concrete Floor Plank



Calculated ψ -values

	Inner leaf blockwork
	Aircrete Block $\lambda \leq 0.19$ W/mK
Cavity Insulation	ψ -value W/mK
75mm $\lambda=0.038$	0.048
100mm $\lambda=0.038$	0.038
150mm $\lambda=0.038$	0.027

Points to Watch

- Ensure block face is kept clean of mortar snots and other debris during construction to permit tight fit of external wall insulation.
- Seal between the wall air barrier and the floor above and below the connection with a flexible sealant.
- Separating floors require additional layers and components to comply with Fire and Noise requirements
- Seal all penetrations into block leaf with a flexible sealant or purpose made shoe, which should itself be sealed to the floor type when built into the wall rather than held on hangars.