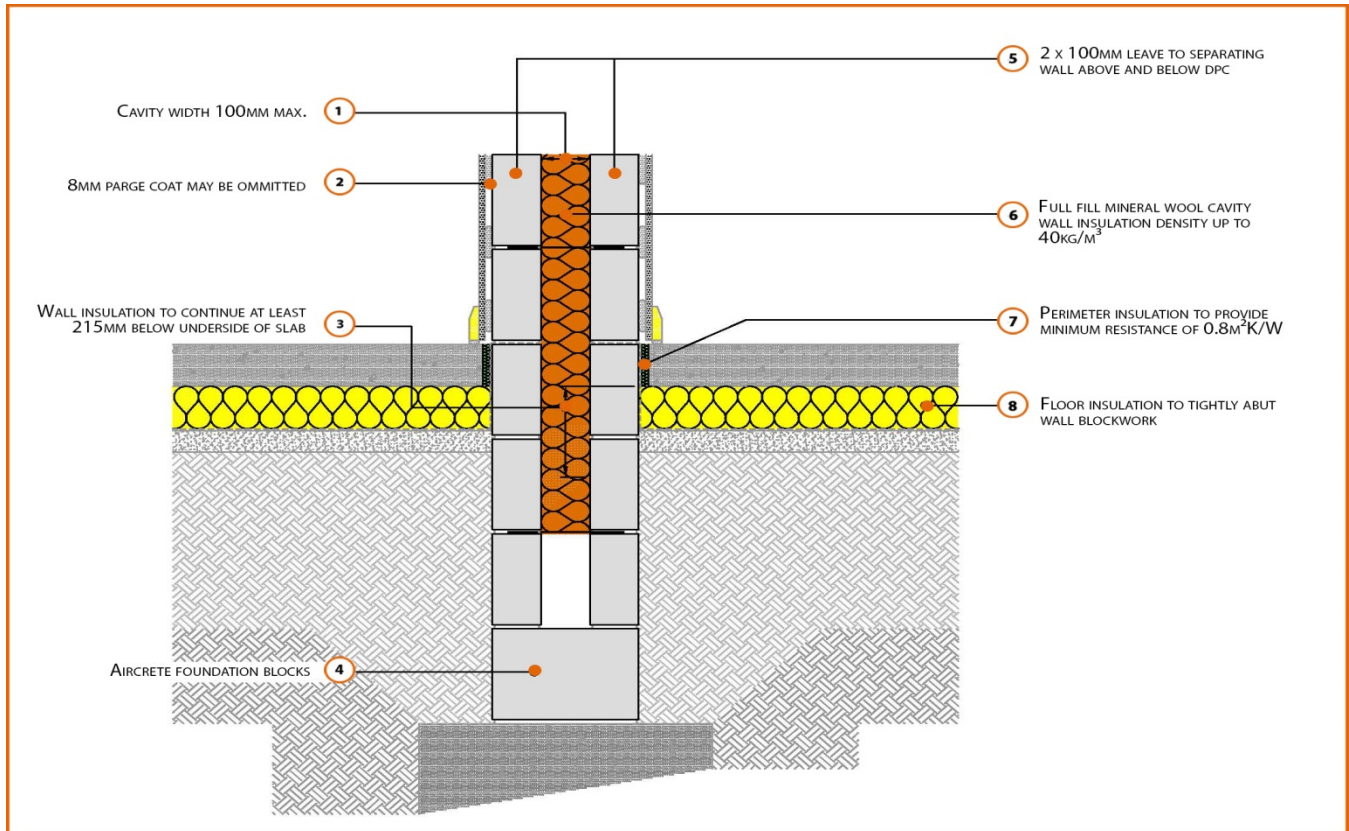


# LABC Registered Construction Details

## Masonry



Registration Number: P1PCFF5



### Build Up

Masonry Party Wall

2 x 100mm Aircrete Block (0.15W/m<sup>2</sup>K) Party (Separating) Wall

100mm cavity fully filled with insulation (0.044W/Mk)

Ground Bearing Concrete Floor

Insulation Below Floor Slab



## Calculated $\psi$ -values

Separating Wall Blockwork	
Aircrete Block $\lambda = 0.15 \text{ W/mK}$	
Floor Insulation	$\psi$ -value W/mK
100mm $\lambda=0.022$	0.045
150mm $\lambda=0.022$	0.046

## Points to Watch

- Ensure cavities are kept clean of mortar snots and other debris during construction
- Ensure that the damp proof course is correctly positioned.
- Damp proof membrane / air barrier should be lapped to damp proof course and plaster stop bead.
- Any service penetrations through the damp proof membrane / air barrier should be suitably sealed.
- The wall insulation installed must be considered fit for purpose below the wall dpc in relation to water absorption.
- Seal all penetrations through air barrier with flexible sealant.
- Separating walls require additional layers and components to comply with Fire and Noise requirements
- The density of the wall insulation MUST be no greater than  $40\text{kg/m}^3$